

Peyton



Traditional (standard)



Craftsman (optional)



Farmhouse (optional)



Scandinavian (optional)



3,810 total sq.ft. | 2,591 finished sq.ft.

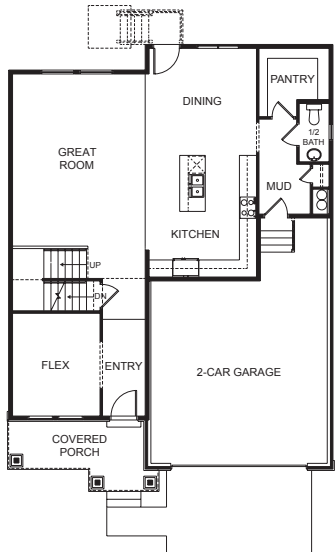


3

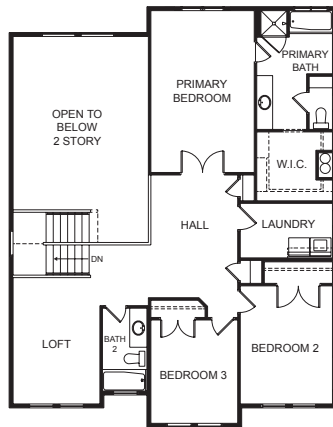


2.5

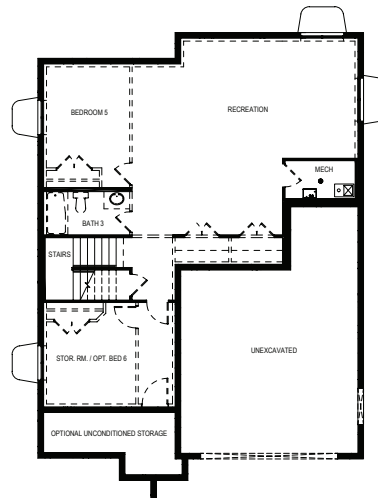
FIRST FLOOR



SECOND FLOOR



BASEMENT



SPECIFICATIONS

First Floor 1,210 sq.ft.
 Second Floor 1,381 sq.ft.
 Basement 1,219 sq.ft.
 Total Sq. Ft. 3,810 sq.ft.
 Total Finished 2,591 sq.ft.

Bedrooms 3
 (Total Possible) (6)
 Bathrooms 2.5
 (Total Possible) (3.5)

Width 38' - 0"
 Depth 52' - 3"