

Drew-A



Traditional (standard)



Craftsman (optional)



Prairie (optional)



3,349 total sq.ft. | 1,945 finished sq.ft.

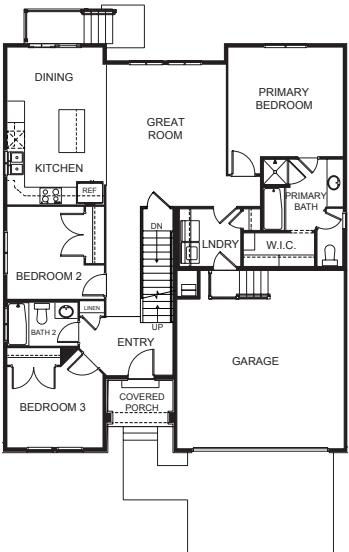


5

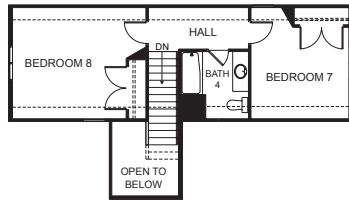


3

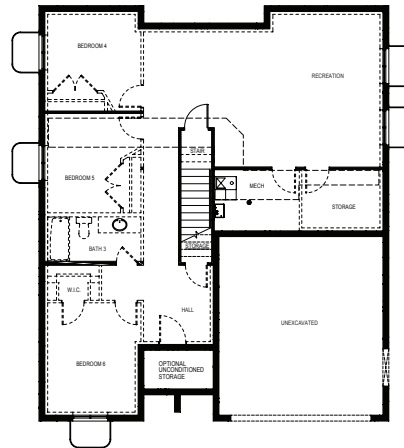
FIRST FLOOR



SECOND FLOOR



BASEMENT



SPECIFICATIONS

First Floor 1,395 sq.ft.
 Second Floor 550 sq.ft.
 Basement 1,404 sq.ft.
 Total Sq. Ft. 3,349 sq.ft.
 Total Finished 1,945 sq.ft.

Bedrooms 5
 (Total Possible) (8)
 Bathrooms 3
 (Total Possible) (4)

Width 40' - 0"
 Depth 47' - 6"