

Landon



Traditional (standard)



Craftsman (optional)



Farmhouse (optional)



4,315 total sq.ft. | 2,175 finished sq.ft.

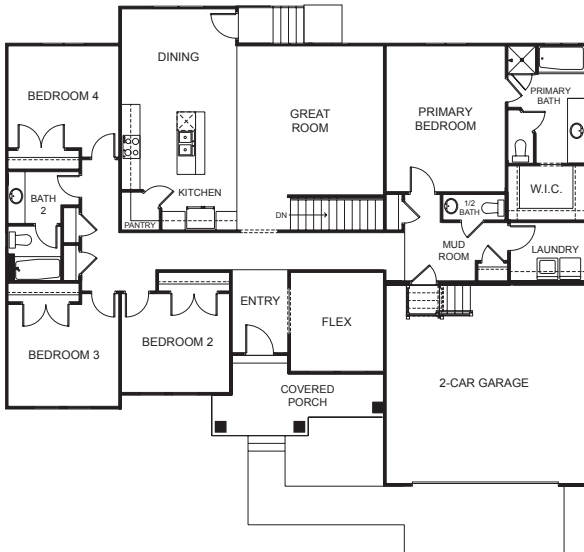


4

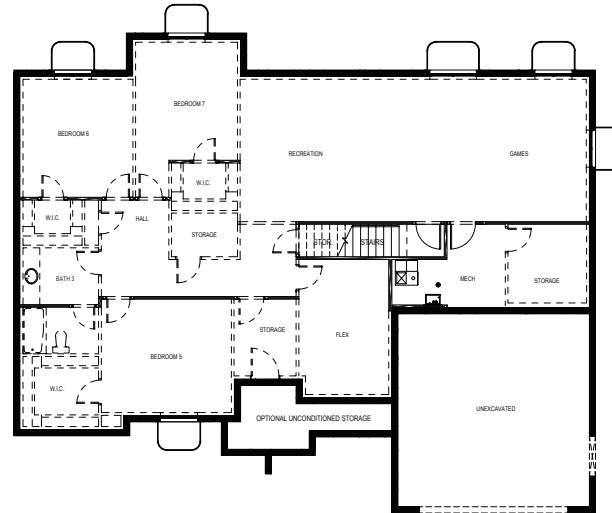


2.5

FIRST FLOOR



BASEMENT



SPECIFICATIONS

First Floor 2,151 sq.ft.
 Basement 2,164 sq.ft.
 Total Sq. Ft. 4,315 sq.ft.
 Total Finished 2,175 sq.ft.

Bedrooms 4
 (Total Possible) (7)
 Bathrooms 2.5
 (Total Possible) (3.5)

Width 62' - 10"
 Depth 51' - 10"